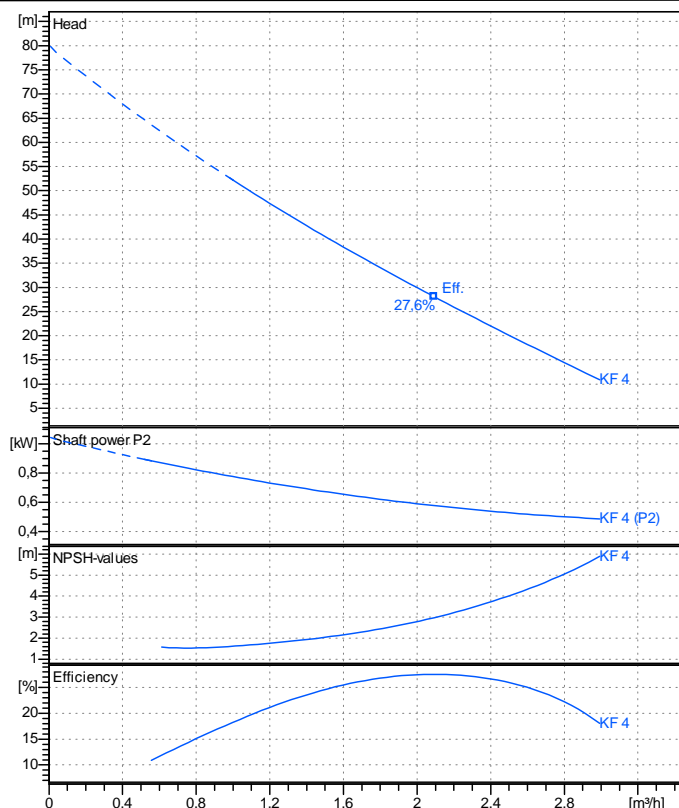


Receiver

From

Company name
Respons. Department
Person in charge
Phone number
Fax no
E-mail address



Operating data specification

Nominal flow	m ³ /h	0
Nominal head	m	0
Static head	m	0
NPSH - v value of plant	m	0
Inlet pressure	bar	0,09793
Fluid	Water, pure	
Operating temperature t A	°C	20
Density at t A	kg/m ³	998,3
Kin. viscosity at t A	mm ² /s	1.005

Pump

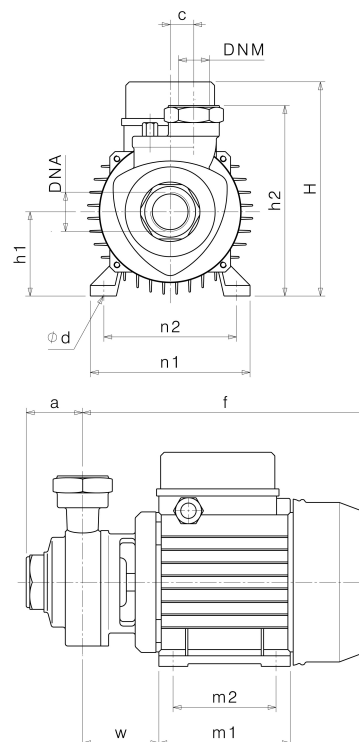
Pump name		KF 4	
Size			
Design			
Speed rpm	2850	No of stages	1
Impeller type	Peripheral impeller		
Flow	Nominal	m ³ /h	
	Max-	m ³ /h	2,99
	Min-	m ³ /h	1
Head	Nominal	m	
	Max-	m	52,2
	Min-	m	10,9
Head H(Q=0)		m	79,8
NPSH 3%		m	
Max. working pressure		bar	7,82
Shaft power		kW	
Efficiency		%	
Max absorbed power		kW	0,88426

Materials Pump

Shaft		Stainless steel AISI 420 (1.4028)		
Impeller		Brass		
Pump body		Cast iron EN-GJL-200		
Support		Cast iron EN-GJL-200		
OR		NBR Rubber		
Mechanical seal		BXPg (Gra/Cer/NBR)		
Motor		Frame size	80	
Manufacturer / Type		SAER 80 2 - 0,75 3~		
Rated power	kW	0,75	Efficiency 4/4	0 %
Electric current	A	4,8 A	Speed rpm	2950
Electric voltage	V	230 V	3~ Hz	50
Starting mode		Unknown		
Degree of protection		IP 44	Insulation class	F

Dimensions in mm

a	45
DNA	G 1"
DNM	G 1"
f	240,5
H	180
h1	71
h2	161
m1	112
m2	90
n1	135
n2	112
od	7
w	64,5



Remarks:

Project	Project ID	Created by	Created on 2019-02-13	Last update
---------	------------	------------	---------------------------------	-------------